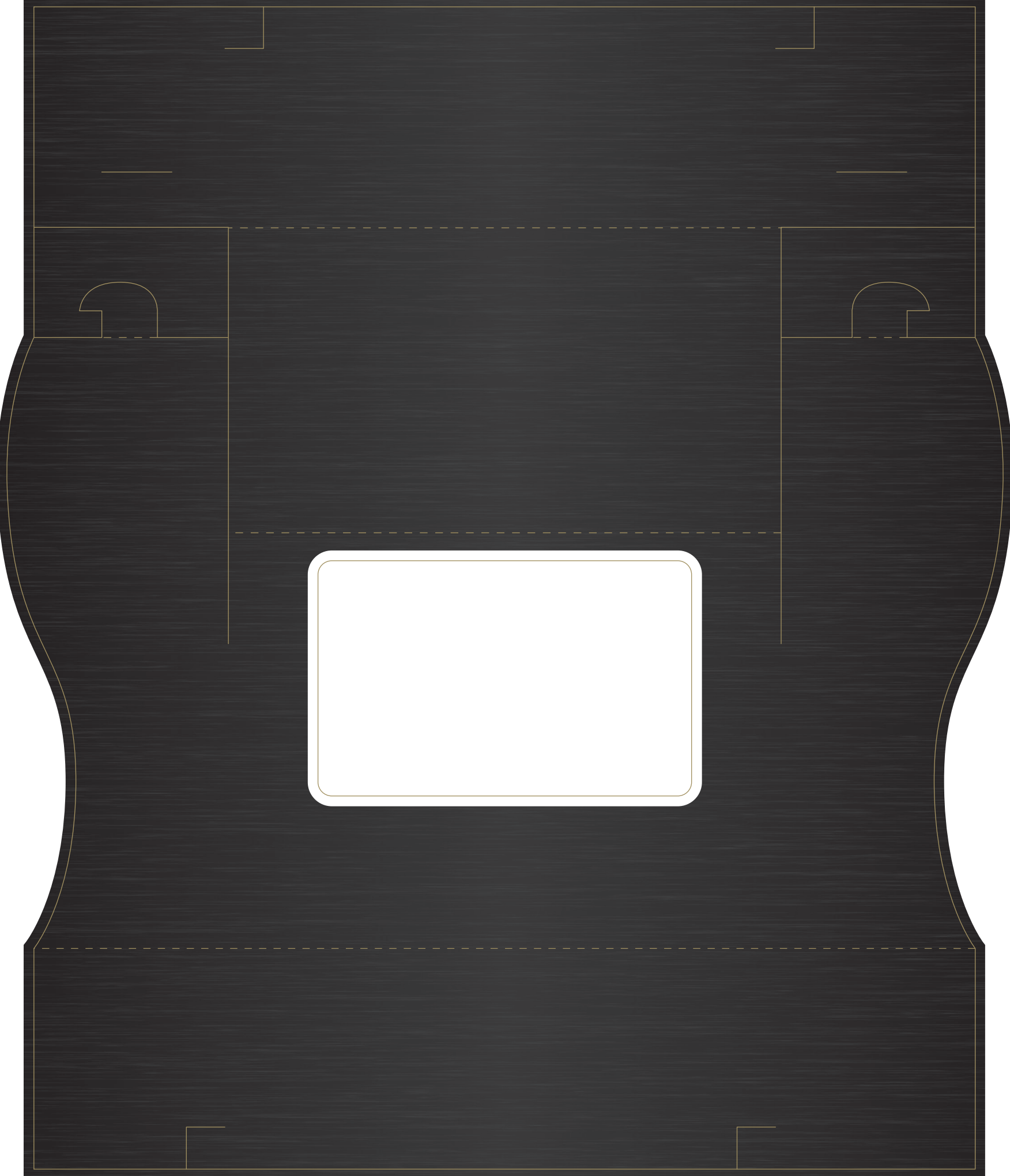
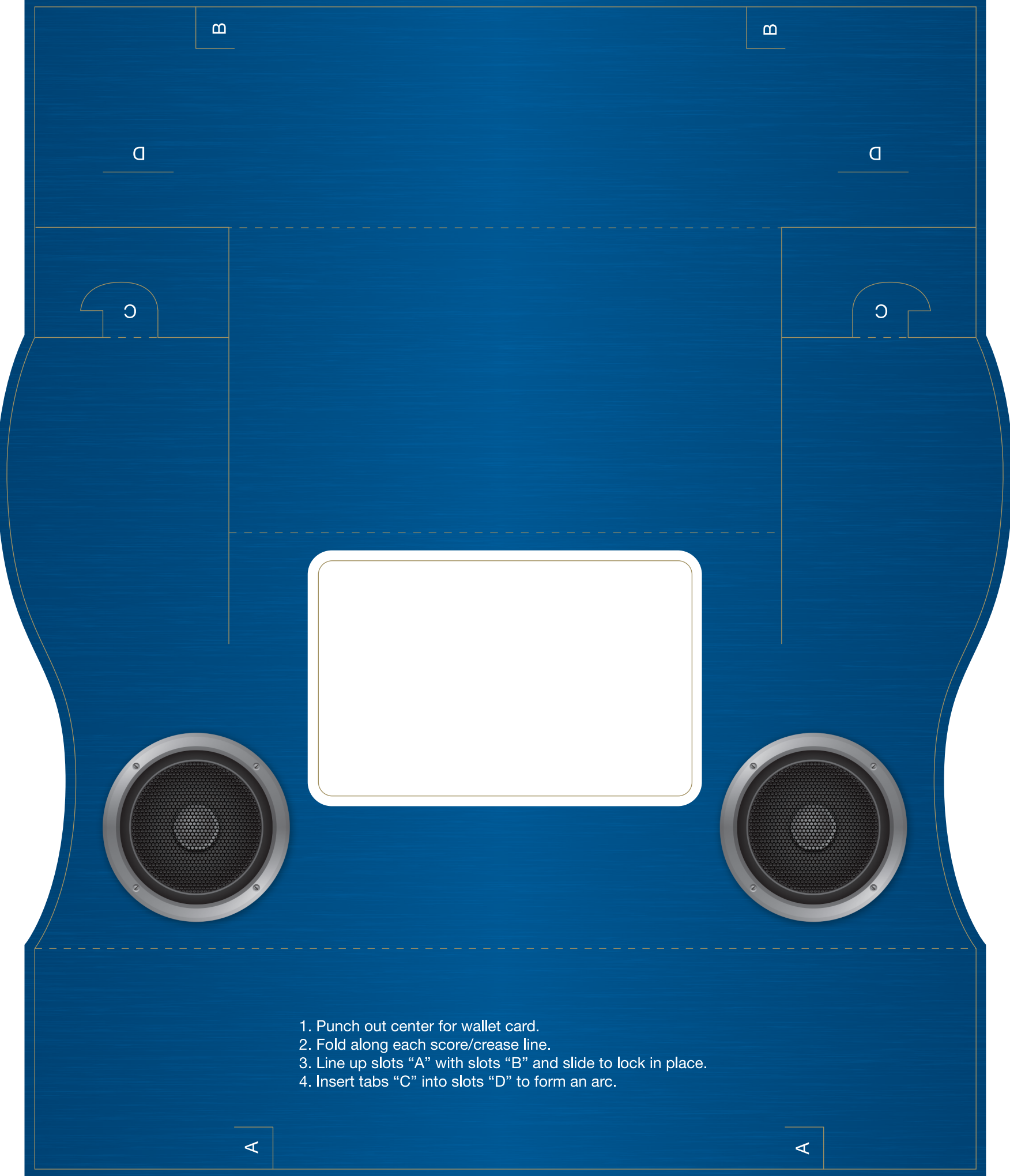




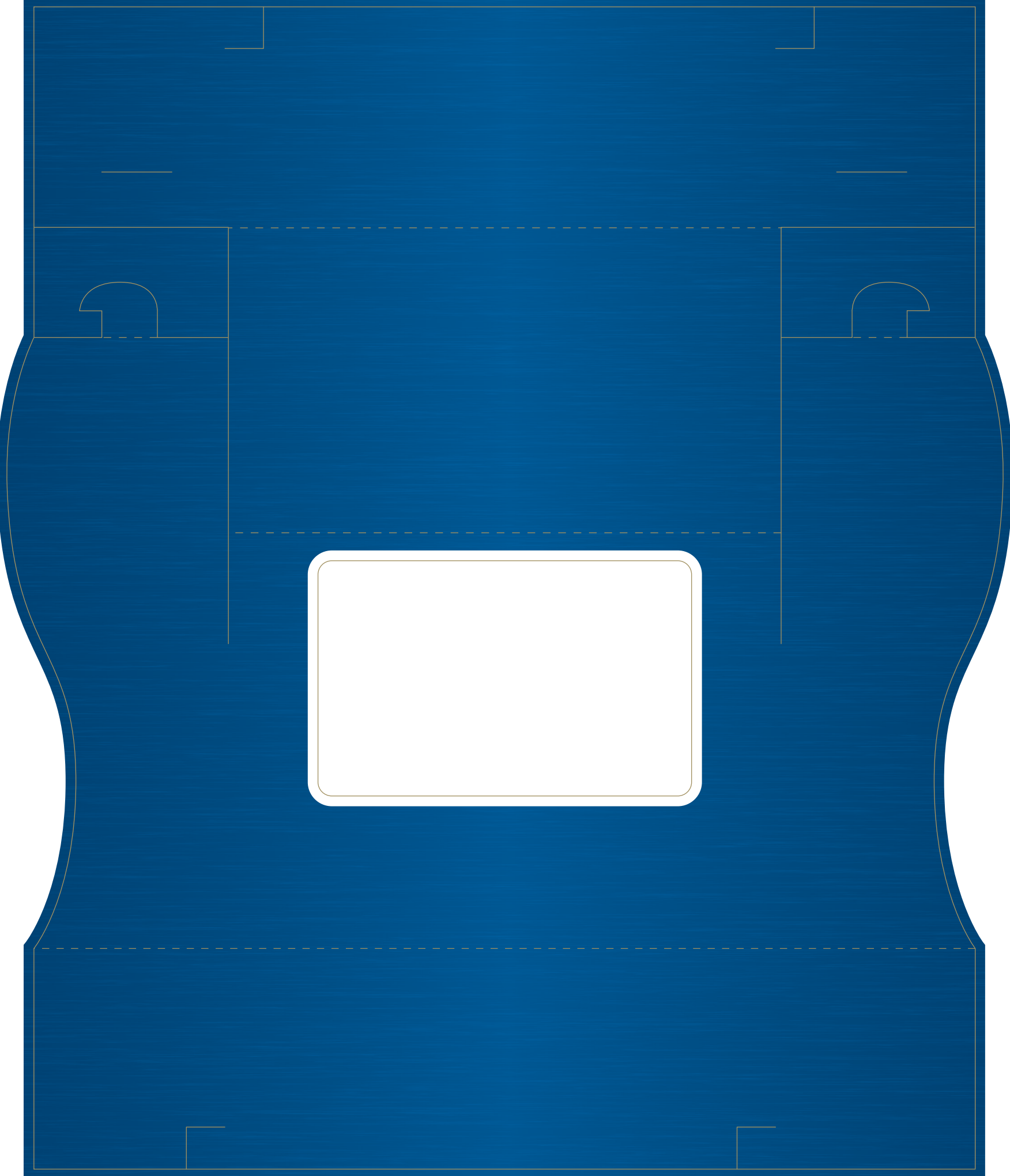
1. Punch out center for wallet card.
2. Fold along each score/crease line.
3. Line up slots "A" with slots "B" and slide to lock in place.
4. Insert tabs "C" into slots "D" to form an arc.





1. Punch out center for wallet card.
2. Fold along each score/crease line.
3. Line up slots "A" with slots "B" and slide to lock in place.
4. Insert tabs "C" into slots "D" to form an arc.







B

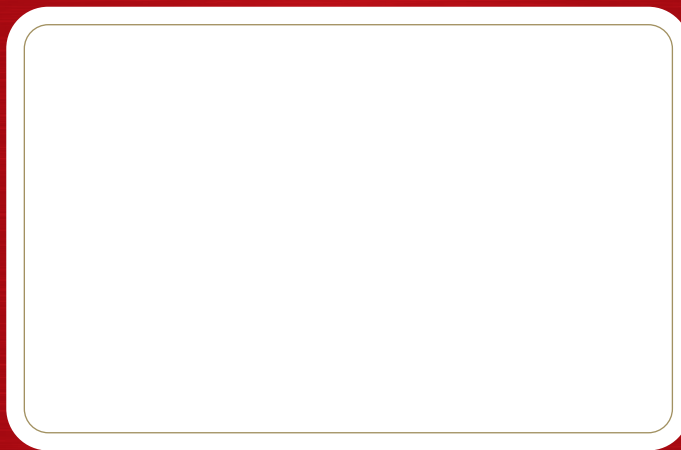
B

D

D

C

C



1. Punch out center for wallet card.
2. Fold along each score/crease line.
3. Line up slots "A" with slots "B" and slide to lock in place.
4. Insert tabs "C" into slots "D" to form an arc.

A

A

